



# MCQ1806

## 3kV<sub>RMS</sub> Isolated Hall-Effect Current Sensor with 500V<sub>RMS</sub> Working Voltage and ±2.5% Accuracy, AEC-Q100 Qualified

### DESCRIPTION

The MCQ1806 is an automotive-grade, linear Hall-effect current sensor for AC and DC current sensing. The Hall array is differential, which cancels out any stray magnetic field.

A primary conductor with a low resistance allows the current to flow close to the IC, which contains high-accuracy Hall-effect sensors. This current generates a magnetic field that is sensed at two different points by the integrated Hall-effect transducers. The magnetic field difference between these two points is then converted into a voltage that is proportional to the applied current. A spinning current technique is used for a low, stable offset.

The galvanic isolation between the pins of the primary conductive path and the sensor leads allows the MCQ1806 to replace optoisolators and other isolation devices.

The MCQ1806 requires a minimal number of readily available, standard external components. The device's small SOIC-8 footprint saves board area and makes it well-suited for space-constrained applications.

### FEATURES

- 3.3V or 5V Single-Supply Options
- Immune to External Magnetic Fields via Differential Sensing
- 3kV<sub>RMS</sub> Minimum Isolation Voltage
- 500V<sub>RMS</sub> Maximum Working Voltage
- ±2.5% Total Accuracy
- 0.9mΩ Internal Conductor Resistance
- ±5A to ±50A Bidirectional Range
- Adjustable Bandwidth Up to 100kHz
- Ratiometric Output from Supply Voltage
- Output Proportional to AC and DC Currents
- Factory-Trimmed for Accuracy
- No Magnetic Hysteresis
- Available in an SOIC-8 Package
- Available in AEC-Q100 Grade 1



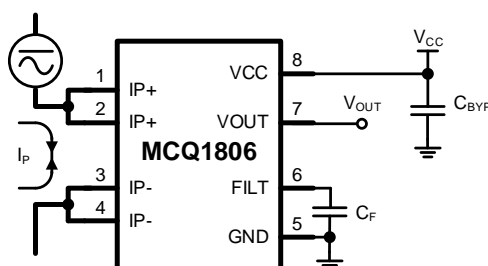
CB Certificate Number:  
CA-11398-UL

### APPLICATIONS

- Automotive Systems
- Multi-Phase Inverters
- Motor Controls
- Load Detection and Management
- Switch-Mode Power Supplies
- Over-Current (OC) Fault Protection

All MPS parts are lead-free, halogen-free, and adhere to the RoHS directive. For MPS green status, please visit the MPS website under Quality Assurance. "MPS", the MPS logo, and "Simple, Easy Solutions" are trademarks of Monolithic Power Systems, Inc. or its subsidiaries.

### TYPICAL APPLICATION <sup>(1)</sup>



#### Note:

- 1) The output voltage ( $V_{OUT}$ ) is proportional to the primary current ( $I_P$ ) within the specified range ( $-I_{P_{MAX}}$  to  $+I_{P_{MAX}}$ ). The tradeoff between noise bandwidth can be adjusted by connecting a capacitor ( $C_F$ ) between the FILT and GND pins.

## ORDERING INFORMATION

Part Number*	Typ Supply Voltage (V)	Optimized Primary Current Range (A)	Typ Sensitivity (SENS) (mV/A)	Top Marking	MSL Rating
MCQ1806GS-3-05-AEC1	3.3	$\pm 5$	264	MCQ1806	1
MCQ1806GS-3-10-AEC1	3.3	$\pm 10$	132		
MCQ1806GS-3-20-AEC1	3.3	$\pm 20$	66		
MCQ1806GS-3-25-AEC1	3.3	$\pm 25$	52.8		
MCQ1806GS-3-30-AEC1	3.3	$\pm 30$	44		
MCQ1806GS-3-40-AEC1	3.3	$\pm 40$	33		
MCQ1806GS-3-50-AEC1	3.3	$\pm 50$	26.4		
MCQ1806GS-5-05-AEC1	5	$\pm 5$	400		
MCQ1806GS-5-10-AEC1	5	$\pm 10$	200		
MCQ1806GS-5-20-AEC1	5	$\pm 20$	100		
MCQ1806GS-5-25-AEC1	5	$\pm 25$	80		
MCQ1806GS-5-30-AEC1	5	$\pm 30$	66		
MCQ1806GS-5-40-AEC1	5	$\pm 40$	50		
MCQ1806GS-5-50-AEC1	5	$\pm 50$	40		

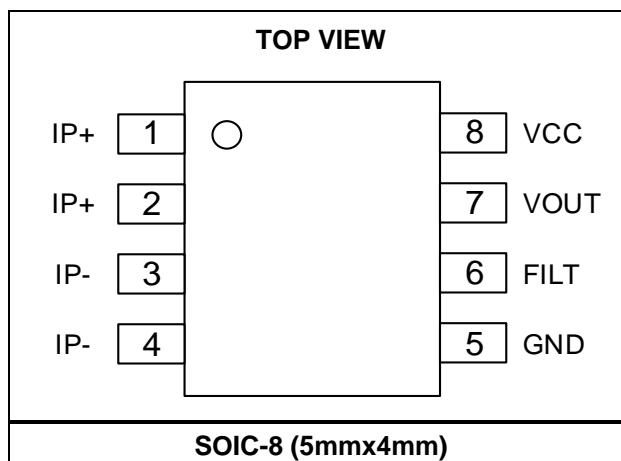
\* For Tape & Reel, add suffix -Z (e.g. MCQ1806GS-3-05-AEC1-Z).

## TOP MARKING

**MCQ1806**  
**LLLLLLLL**  
**MPSYWW**

MCQ1806: Part number  
 LLLLLLLL: Lot number  
 MPS: MPS prefix  
 Y: Year code  
 WW: Week code

## PACKAGE REFERENCE



## PIN FUNCTIONS

Pin #	Name	Description
1, 2	IP+	<b>Primary current (+).</b> IP+ is the terminal pin for the current being sampled. The IP+ pins are internally connected together.
3, 4	IP-	<b>Primary current (-).</b> IP- is the terminal pin for the current being sampled. The IP- pins are internally connected together.
5	GND	<b>Ground.</b> GND is the signal ground terminal pin.
6	FILT	<b>Filter.</b> FILT is the terminal pin for the external capacitor ( $C_F$ ), which sets the bandwidth. FILT can be left floating if the bandwidth setting is not required.
7	VOU	<b>Analog output.</b>
8	VCC	<b>Voltage supply.</b> Bypass the VCC pin with a $1\mu\text{F}$ low-ESR ceramic capacitor, placed as close to VCC as possible.

### ABSOLUTE MAXIMUM RATINGS <sup>(2)</sup>

Supply voltage ( $V_{CC}$ ) ..... -0.1V to +6V  
 Output voltage ( $V_{OUT}$ ) ..... -0.1V to +6V  
 $V_{FILT}$  ..... -0.1V to +6V  
 Junction temperature ..... 165°C  
 Lead temperature ..... 260°C  
 Storage temperature ..... -65°C to +165°C

### ESD Ratings

Human body model (HBM) .....  $\pm 2\text{kV}$   
 Charged device model (CDM) .....  $\pm 2\text{kV}$

### Recommended Operating Conditions <sup>(3)</sup>

$V_{CC}$  for the 3.3V options ..... 3V to 3.6V  
 $V_{CC}$  for the 5V options ..... 4.5V to 5.5V  
 Operating junction temp ( $T_J$ ) ..... -40°C to +125°C

#### Notes:

- 2) Exceeding these ratings may damage the device.
- 3) The device is not guaranteed to function outside of its operating conditions.

## ISOLATION CHARACTERISTICS

Parameters	Symbol	Conditions	Rating	Units
Dielectric surge strength test voltage	$V_{\text{SURGE}}$	Test $\pm 5$ pulses at 2 pulses per minute, 1.2 $\mu\text{s}$ rise, 50 $\mu\text{s}$ width, according to IEC61000-4-5	6000	V
Withstand isolation voltage	$V_{\text{ISO}}$	Agency type-tested for 60s, 100% tested in production, according to IEC62368-1	3000	$V_{\text{RMS}}$
Maximum isolation working voltage	$V_{\text{IOWM}}$	Maximum approved working voltage for basic isolation, according to IEC62368-1	700	$V_{\text{PK}}$ or $V_{\text{DC}}$
			500	$V_{\text{RMS}}$
External clearance	CLR	Shortest distance through the air from the IP+ and IP- leads to the signal leads	4.2	mm
External creepage	CPG	Shortest distance along the package body from the IP+ and IP- leads to the signal leads	4.2	mm

## WITHSTANDING CURRENT CAPABILITY

Parameters	Symbol	Conditions	Rating	Units
Surge test current	$I_{\text{SURGE}}$	Test $\pm 5$ pulses at 2 pulse per minute, 8 $\mu\text{s}$ rise, 20 $\mu\text{s}$ width, according to IEC61000-4-5	3000	A
Transient current test <sup>(4)</sup>	$I_{\text{TRANSIENT}}$	Single peak, 10ms	250	A

### Note:

4) For the detailed transient current capability test, refer to MPS application note AN178, available on the MPS website.

## MCQ1806 ELECTRICAL CHARACTERISTICS

$V_{CC} = 3.3V$  for the 3.3V option,  $V_{CC} = 5V$  for the 5V option,  $T_J = -40^{\circ}C$  to  $+125^{\circ}C$ , typical values are tested at  $T_J = 25^{\circ}C$ , unless otherwise noted.

Parameters	Symbol	Condition	Min	Typ <sup>(5)</sup>	Max	Units
Supply voltage	$V_{CC}$	3.3V option	3		3.6	V
		5V option	4.5		5.5	V
$V_{CC}$ under-voltage lockout (UVLO) threshold	$V_{CC\_UVLO}$	$V_{CC}$ rising	2	2.5	3	V
$V_{CC}$ UVLO hysteresis	$V_{CC\_UVLO\_HYS}$			400	750	mV
Operating supply current	$I_{CC}$			8.5	10.5	mA
Output capacitance load <sup>(9)</sup>	$C_L$	From VOUT to GND			10	nF
Output resistive load <sup>(9)</sup>	$R_L$	From VOUT to GND	4.7			k $\Omega$
Internal filter resistance	$R_{FI}$			1.5		k $\Omega$
Internal filter capacitance	$C_{FI}$			1		nF
Primary conductor resistance <sup>(10)</sup>	$R_P$	Effective		0.9		m $\Omega$
Frequency bandwidth	$f_{BW}$	FILT is disconnected		100		kHz
Power-on time	$t_{PO}$	$I_P = I_{P\_MAX}$ , FILT is disconnected		90		$\mu s$
Rising time	$t_R$	$I_P = I_{P\_MAX}$ , FILT is disconnected		4		$\mu s$
Propagation delay	$t_{PD}$	$I_P = I_{P\_MAX}$ , FILT is disconnected		1.5		$\mu s$
Response time	$t_{RESPONSE}$	$I_P = I_{P\_MAX}$ , FILT is disconnected		5		$\mu s$
Noise density	$I_{ND}$	Input referred noise density		200		$\mu A_{(RMS)}/\sqrt{Hz}$
Noise	$I_N$	Input referred, 1nF on FILT, 60kHz bandwidth		50		$mA_{(RMS)}$
Nonlinearity	$E_{LIN}$	Across the entire $I_P$ range		0.5		%
Ratiometry coefficients <sup>(9)</sup>	$K_{SENS}$	$V_{CC}$ from $V_{CC\_MIN}$ to $V_{CC\_MAX}$	98	100	102	%
	$K_{VO}$	$V_{CC}$ from $V_{CC\_MIN}$ to $V_{CC\_MAX}$	99	100	101	%
Zero-current output voltage ( $V_{OUT}$ )	$V_{OUT(Q)}$	$I_P = 0A$		$V_{CC} / 2$		V
First Hall magnetic coupling factor	$P_{MCF1}$			0.6		mT/A
Second Hall magnetic coupling factor	$P_{MCF2}$			0.3		mT/A
Hall plate matching	$M_H$			$\pm 1$		%
Saturation voltage <sup>(6) (9)</sup>	$V_{OUT(H)}$	3.3V option, $R_L = 4.7k\Omega$	$V_{CC} - 0.3$			V
		5V option, $R_L = 4.7k\Omega$	$V_{CC} - 0.5$			V
	$V_{OUT(L)}$	3.3V option, $R_L = 4.7k\Omega$			0.3	V
		5V option, $R_L = 4.7k\Omega$			0.5	V

## MCQ1806-3-05-AEC1 PERFORMANCE CHARACTERISTICS

$V_{CC} = 3.3V$ ,  $T_J = -40^{\circ}C$  to  $+125^{\circ}C$ , unless otherwise noted.

Parameters	Symbol	Condition	Min	Typ <sup>(5)</sup>	Max	Units
Optimized accuracy range <sup>(7)</sup>	$I_P$		-5		+5	A
Sensitivity	SENS	$-5A \leq I_P \leq +5A$ , $T_J = 25^{\circ}C$		264		mV/A
Sensitivity error	$E_{SENS}$	$I_P = 5A$ , $T_J = 25^{\circ}C$ to $125^{\circ}C$	-2		+2	%
		$I_P = 5A$ , $T_J = -40^{\circ}C$ to $+25^{\circ}C$	-4		+4	%
Offset voltage <sup>(8)</sup>	$V_{OE}$	$I_P = 0A$ , $T_J = 25^{\circ}C$ to $125^{\circ}C$	-15		+15	mV
		$I_P = 0A$ , $T_J = -40^{\circ}C$ to $+25^{\circ}C$	-15		+15	mV
Total output error	$E_{TOT}$	$I_P = 5A$ , $T_J = 25^{\circ}C$ to $125^{\circ}C$	-2.5		+2.5	%
		$I_P = 5A$ , $T_J = -40^{\circ}C$ to $+25^{\circ}C$	-4.5		+4.5	%
Sensitivity error lifetime drift	$E_{SENS(D)}$			$\pm 1$		%
Total output error lifetime drift	$E_{TOT(D)}$			$\pm 1$		%

## MCQ1806-3-10-AEC1 PERFORMANCE CHARACTERISTICS

$V_{CC} = 3.3V$ ,  $T_J = -40^{\circ}C$  to  $+125^{\circ}C$ , unless otherwise noted.

Parameters	Symbol	Condition	Min	Typ <sup>(5)</sup>	Max	Units
Optimized accuracy range <sup>(7)</sup>	$I_P$		-10		+10	A
Sensitivity	SENS	$-10A \leq I_P \leq +10A$ , $T_J = 25^{\circ}C$		132		mV/A
Sensitivity error	$E_{SENS}$	$I_P = 10A$ , $T_J = 25^{\circ}C$ to $125^{\circ}C$	-2		+2	%
		$I_P = 10A$ , $T_J = -40^{\circ}C$ to $+25^{\circ}C$	-4		+4	%
Offset voltage <sup>(8)</sup>	$V_{OE}$	$I_P = 0A$ , $T_J = 25^{\circ}C$ to $125^{\circ}C$	-10		+10	mV
		$I_P = 0A$ , $T_J = -40^{\circ}C$ to $+25^{\circ}C$	-10		+10	mV
Total output error	$E_{TOT}$	$I_P = 10A$ , $T_J = 25^{\circ}C$ to $125^{\circ}C$	-2.5		+2.5	%
		$I_P = 10A$ , $T_J = -40^{\circ}C$ to $+25^{\circ}C$	-4.5		+4.5	%
Sensitivity error lifetime drift	$E_{SENS(D)}$			$\pm 1$		%
Total output error lifetime drift	$E_{TOT(D)}$			$\pm 1$		%

## MCQ1806-3-20-AEC1 PERFORMANCE CHARACTERISTICS

$V_{CC} = 3.3V$ ,  $T_J = -40^{\circ}C$  to  $+125^{\circ}C$ , unless otherwise noted.

Parameters	Symbol	Condition	Min	Typ <sup>(5)</sup>	Max	Units
Optimized accuracy range <sup>(7)</sup>	$I_P$		-20		+20	A
Sensitivity	SENS	$-20A \leq I_P \leq +20A$ , $T_J = 25^{\circ}C$		66		mV/A
Sensitivity error	$E_{SENS}$	$I_P = 20A$ , $T_J = 25^{\circ}C$ to $125^{\circ}C$	-2		+2	%
		$I_P = 20A$ , $T_J = -40^{\circ}C$ to $+25^{\circ}C$	-4		+4	%
Offset voltage <sup>(8)</sup>	$V_{OE}$	$I_P = 0A$ , $T_J = 25^{\circ}C$ to $125^{\circ}C$	-10		+10	mV
		$I_P = 0A$ , $T_J = -40^{\circ}C$ to $+25^{\circ}C$	-10		+10	mV
Total output error	$E_{TOT}$	$I_P = 20A$ , $T_J = 25^{\circ}C$ to $125^{\circ}C$	-2.5		+2.5	%
		$I_P = 20A$ , $T_J = -40^{\circ}C$ to $+25^{\circ}C$	-4.5		+4.5	%
Sensitivity error lifetime drift	$E_{SENS(D)}$			$\pm 1$		%
Total output error lifetime drift	$E_{TOT(D)}$			$\pm 1$		%

## MCQ1806-3-25-AEC1 PERFORMANCE CHARACTERISTICS

$V_{CC} = 3.3V$ ,  $T_J = -40^\circ C$  to  $+125^\circ C$ , unless otherwise noted.

Parameters	Symbol	Condition	Min	Typ <sup>(5)</sup>	Max	Units
Optimized accuracy range <sup>(7)</sup>	$I_P$		-25		+25	A
Sensitivity	SENS	$-25A \leq I_P \leq +25A$ , $T_J = 25^\circ C$		52.8		mV/A
Sensitivity error	$E_{SENS}$	$I_P = 25A$ , $T_J = 25^\circ C$ to $125^\circ C$	-2		+2	%
		$I_P = 25A$ , $T_J = -40^\circ C$ to $+25^\circ C$	-4		+4	%
Offset voltage <sup>(8)</sup>	$V_{OE}$	$I_P = 0A$ , $T_J = 25^\circ C$ to $125^\circ C$	-10		+10	mV
		$I_P = 0A$ , $T_J = -40^\circ C$ to $+25^\circ C$	-10		+10	mV
Total output error	$E_{TOT}$	$I_P = 25A$ , $T_J = 25^\circ C$ to $125^\circ C$	-2.5		+2.5	%
		$I_P = 25A$ , $T_J = -40^\circ C$ to $+25^\circ C$	-4.5		+4.5	%
Sensitivity error lifetime drift	$E_{SENS(D)}$			$\pm 1$		%
Total output error lifetime drift	$E_{TOT(D)}$			$\pm 1$		%

## MCQ1806-3-30-AEC1 PERFORMANCE CHARACTERISTICS

$V_{CC} = 3.3V$ ,  $T_J = -40^\circ C$  to  $+125^\circ C$ , unless otherwise noted.

Parameters	Symbol	Condition	Min	Typ <sup>(5)</sup>	Max	Units
Optimized accuracy range <sup>(7)</sup>	$I_P$		-30		+30	A
Sensitivity	SENS	$-30A \leq I_P \leq +30A$ , $T_J = 25^\circ C$		44		mV/A
Sensitivity error	$E_{SENS}$	$I_P = 30A$ , $T_J = 25^\circ C$ to $125^\circ C$	-2		+2	%
		$I_P = 30A$ , $T_J = -40^\circ C$ to $+25^\circ C$	-4		+4	%
Offset voltage <sup>(8)</sup>	$V_{OE}$	$I_P = 0A$ , $T_J = 25^\circ C$ to $125^\circ C$	-10		+10	mV
		$I_P = 0A$ , $T_J = -40^\circ C$ to $+25^\circ C$	-10		+10	mV
Total output error	$E_{TOT}$	$I_P = 30A$ , $T_J = 25^\circ C$ to $125^\circ C$	-2.5		+2.5	%
		$I_P = 30A$ , $T_J = -40^\circ C$ to $+25^\circ C$	-4.5		+4.5	%
Sensitivity error lifetime drift	$E_{SENS(D)}$			$\pm 1$		%
Total output error lifetime drift	$E_{TOT(D)}$			$\pm 1$		%

## MCQ1806-3-40-AEC1 PERFORMANCE CHARACTERISTICS

$V_{CC} = 3.3V$ ,  $T_J = -40^\circ C$  to  $+125^\circ C$ , unless otherwise noted.

Parameters	Symbol	Condition	Min	Typ <sup>(5)</sup>	Max	Units
Optimized accuracy range <sup>(7)</sup>	$I_P$		-40		+40	A
Sensitivity	SENS	$-40A \leq I_P \leq +40A$ , $T_J = 25^\circ C$		33		mV/A
Sensitivity error	$E_{SENS}$	$I_P = 40A$ , $T_J = 25^\circ C$ to $125^\circ C$	-2		+2	%
		$I_P = 40A$ , $T_J = -40^\circ C$ to $+25^\circ C$	-4		+4	%
Offset voltage <sup>(8)</sup>	$V_{OE}$	$I_P = 0A$ , $T_J = 25^\circ C$ to $125^\circ C$	-10		+10	mV
		$I_P = 0A$ , $T_J = -40^\circ C$ to $+25^\circ C$	-10		+10	mV
Total output error	$E_{TOT}$	$I_P = 40A$ , $T_J = 25^\circ C$ to $125^\circ C$	-2.5		+2.5	%
		$I_P = 40A$ , $T_J = -40^\circ C$ to $+25^\circ C$	-4.5		+4.5	%
Sensitivity error lifetime drift	$E_{SENS(D)}$			$\pm 1$		%
Total output error lifetime drift	$E_{TOT(D)}$			$\pm 1$		%

## MCQ1806-3-50-AEC1 PERFORMANCE CHARACTERISTICS

$V_{CC} = 3.3V$ ,  $T_J = -40^{\circ}C$  to  $+125^{\circ}C$ , unless otherwise noted.

Parameters	Symbol	Condition	Min	Typ <sup>(5)</sup>	Max	Units
Optimized accuracy range <sup>(7)</sup>	$I_P$		-50		+50	A
Sensitivity	SENS	$-50A \leq I_P \leq +50A$ , $T_J = 25^{\circ}C$		26.4		mV/A
Sensitivity error	$E_{SENS}$	$I_P = 50A$ , $T_J = 25^{\circ}C$ to $125^{\circ}C$	-2		+2	%
		$I_P = 50A$ , $T_J = -40^{\circ}C$ to $+25^{\circ}C$	-4		+4	%
Offset voltage <sup>(8)</sup>	$V_{OE}$	$I_P = 0A$ , $T_J = 25^{\circ}C$ to $125^{\circ}C$	-10		+10	mV
		$I_P = 0A$ , $T_J = -40^{\circ}C$ to $+25^{\circ}C$	-10		+10	mV
Total output error	$E_{TOT}$	$I_P = 50A$ , $T_J = 25^{\circ}C$ to $125^{\circ}C$	-2.5		+2.5	%
		$I_P = 50A$ , $T_J = -40^{\circ}C$ to $+25^{\circ}C$	-4.5		+4.5	%
Sensitivity error lifetime drift	$E_{SENS(D)}$			$\pm 1$		%
Total output error lifetime drift	$E_{TOT(D)}$			$\pm 1$		%

## MCQ1806-5-05-AEC1 PERFORMANCE CHARACTERISTICS

$V_{CC} = 5V$ ,  $T_J = -40^{\circ}C$  to  $+125^{\circ}C$ , unless otherwise noted.

Parameters	Symbol	Condition	Min	Typ <sup>(5)</sup>	Max	Units
Optimized accuracy range <sup>(7)</sup>	$I_P$		-5		+5	A
Sensitivity	SENS	$-5A \leq I_P \leq +5A$ , $T_J = 25^{\circ}C$		400		mV/A
Sensitivity error	$E_{SENS}$	$I_P = 5A$ , $T_J = 25^{\circ}C$ to $125^{\circ}C$	-2		+2	%
		$I_P = 5A$ , $T_J = -40^{\circ}C$ to $+25^{\circ}C$	-4		+4	%
Offset voltage <sup>(8)</sup>	$V_{OE}$	$I_P = 0A$ , $T_J = 25^{\circ}C$ to $125^{\circ}C$	-15		+15	mV
		$I_P = 0A$ , $T_J = -40^{\circ}C$ to $+25^{\circ}C$	-15		+15	mV
Total output error	$E_{TOT}$	$I_P = 5A$ , $T_J = 25^{\circ}C$ to $125^{\circ}C$	-2.5		+2.5	%
		$I_P = 5A$ , $T_J = -40^{\circ}C$ to $+25^{\circ}C$	-4.5		+4.5	%
Sensitivity error lifetime drift	$E_{SENS(D)}$			$\pm 1$		%
Total output error lifetime drift	$E_{TOT(D)}$			$\pm 1$		%

## MCQ1806-5-10-AEC1 PERFORMANCE CHARACTERISTICS

$V_{CC} = 5V$ ,  $T_J = -40^{\circ}C$  to  $+125^{\circ}C$ , unless otherwise noted.

Parameters	Symbol	Condition	Min	Typ <sup>(5)</sup>	Max	Units
Optimized accuracy range <sup>(7)</sup>	$I_P$		-10		+10	A
Sensitivity	SENS	$-10A \leq I_P \leq +10A$ , $T_J = 25^{\circ}C$		200		mV/A
Sensitivity error	$E_{SENS}$	$I_P = 10A$ , $T_J = 25^{\circ}C$ to $125^{\circ}C$	-2		+2	%
		$I_P = 10A$ , $T_J = -40^{\circ}C$ to $+25^{\circ}C$	-4		+4	%
Offset voltage <sup>(8)</sup>	$V_{OE}$	$I_P = 0A$ , $T_J = 25^{\circ}C$ to $125^{\circ}C$	-15		+15	mV
		$I_P = 0A$ , $T_J = -40^{\circ}C$ to $+25^{\circ}C$	-15		+15	mV
Total output error	$E_{TOT}$	$I_P = 10A$ , $T_J = 25^{\circ}C$ to $125^{\circ}C$	-2.5		+2.5	%
		$I_P = 10A$ , $T_J = -40^{\circ}C$ to $+25^{\circ}C$	-4.5		+4.5	%
Sensitivity error lifetime drift	$E_{SENS(D)}$			$\pm 1$		%
Total output error lifetime drift	$E_{TOT(D)}$			$\pm 1$		%



## MCQ1806-5-20-AEC1 PERFORMANCE CHARACTERISTICS

$V_{CC} = 5V$ ,  $T_J = -40^\circ C$  to  $+125^\circ C$ , unless otherwise noted.

Parameters	Symbol	Condition	Min	Typ <sup>(5)</sup>	Max	Units
Optimized accuracy range <sup>(7)</sup>	$I_P$		-20		+20	A
Sensitivity	SENS	$-20A \leq I_P \leq +20A$ , $T_J = 25^\circ C$		100		mV/A
Sensitivity error	$E_{SENS}$	$I_P = 20A$ , $T_J = 25^\circ C$ to $125^\circ C$	-2		+2	%
		$I_P = 20A$ , $T_J = -40^\circ C$ to $+25^\circ C$	-4		+4	%
Offset voltage <sup>(8)</sup>	$V_{OE}$	$I_P = 0A$ , $T_J = 25^\circ C$ to $125^\circ C$	-10		+10	mV
		$I_P = 0A$ , $T_J = -40^\circ C$ to $+25^\circ C$	-10		+10	mV
Total output error	$E_{TOT}$	$I_P = 20A$ , $T_J = 25^\circ C$ to $125^\circ C$	-2.5		+2.5	%
		$I_P = 20A$ , $T_J = -40^\circ C$ to $+25^\circ C$	-4.5		+4.5	%
Sensitivity error lifetime drift	$E_{SENS(D)}$			$\pm 1$		%
Total output error lifetime drift	$E_{TOT(D)}$			$\pm 1$		%

## MCQ1806-5-25-AEC1 PERFORMANCE CHARACTERISTICS

$V_{CC} = 5V$ ,  $T_J = -40^\circ C$  to  $+125^\circ C$ , unless otherwise noted.

Parameters	Symbol	Condition	Min	Typ <sup>(5)</sup>	Max	Units
Optimized accuracy range <sup>(7)</sup>	$I_P$		-25		+25	A
Sensitivity	SENS	$-25A \leq I_P \leq +25A$ , $T_J = 25^\circ C$		80		mV/A
Sensitivity error	$E_{SENS}$	$I_P = 25A$ , $T_J = 25^\circ C$ to $125^\circ C$	-2		+2	%
		$I_P = 25A$ , $T_J = -40^\circ C$ to $+25^\circ C$	-4		+4	%
Offset voltage <sup>(8)</sup>	$V_{OE}$	$I_P = 0A$ , $T_J = 25^\circ C$ to $125^\circ C$	-10		+10	mV
		$I_P = 0A$ , $T_J = -40^\circ C$ to $+25^\circ C$	-10		+10	mV
Total output error	$E_{TOT}$	$I_P = 25A$ , $T_J = 25^\circ C$ to $125^\circ C$	-2.5		+2.5	%
		$I_P = 25A$ , $T_J = -40^\circ C$ to $+25^\circ C$	-4.5		+4.5	%
Sensitivity error lifetime drift	$E_{SENS(D)}$			$\pm 1$		%
Total output error lifetime drift	$E_{TOT(D)}$			$\pm 1$		%

## MCQ1806-5-30-AEC1 PERFORMANCE CHARACTERISTICS

$V_{CC} = 5V$ ,  $T_J = -40^\circ C$  to  $+125^\circ C$ , unless otherwise noted.

Parameters	Symbol	Condition	Min	Typ <sup>(5)</sup>	Max	Units
Optimized accuracy range <sup>(7)</sup>	$I_P$		-30		+30	A
Sensitivity	SENS	$-30A \leq I_P \leq +30A$ , $T_J = 25^\circ C$		66		mV/A
Sensitivity error	$E_{SENS}$	$I_P = 30A$ , $T_J = 25^\circ C$ to $125^\circ C$	-2		+2	%
		$I_P = 30A$ , $T_J = -40^\circ C$ to $+25^\circ C$	-4		+4	%
Offset voltage <sup>(8)</sup>	$V_{OE}$	$I_P = 0A$ , $T_J = 25^\circ C$ to $125^\circ C$	-10		+10	mV
		$I_P = 0A$ , $T_J = -40^\circ C$ to $+25^\circ C$	-10		+10	mV
Total output error	$E_{TOT}$	$I_P = 30A$ , $T_J = 25^\circ C$ to $125^\circ C$	-2.5		+2.5	%
		$I_P = 30A$ , $T_J = -40^\circ C$ to $+25^\circ C$	-4.5		+4.5	%
Sensitivity error lifetime drift	$E_{SENS(D)}$			$\pm 1$		%
Total output error lifetime drift	$E_{TOT(D)}$			$\pm 1$		%

## MCQ1806-5-40-AEC1 PERFORMANCE CHARACTERISTICS

$V_{CC} = 5V$ ,  $T_J = -40^\circ C$  to  $+125^\circ C$ , unless otherwise noted.

Parameters	Symbol	Condition	Min	Typ <sup>(5)</sup>	Max	Units
Optimized accuracy range <sup>(7)</sup>	$I_P$		-40		+40	A
Sensitivity	SENS	$-40A \leq I_P \leq +40A$ , $T_J = 25^\circ C$		50		mV/A
Sensitivity error	$E_{SENS}$	$I_P = 40A$ , $T_J = 25^\circ C$ to $125^\circ C$	-2		+2	%
		$I_P = 40A$ , $T_J = -40^\circ C$ to $+25^\circ C$	-4		+4	%
Offset voltage <sup>(8)</sup>	$V_{OE}$	$I_P = 0A$ , $T_J = 25^\circ C$ to $125^\circ C$	-10		+10	mV
		$I_P = 0A$ , $T_J = -40^\circ C$ to $+25^\circ C$	-10		+10	mV
Total output error	$E_{TOT}$	$I_P = 40A$ , $T_J = 25^\circ C$ to $125^\circ C$	-2.5		+2.5	%
		$I_P = 40A$ , $T_J = -40^\circ C$ to $+25^\circ C$	-4.5		+4.5	%
Sensitivity error lifetime drift	$E_{SENS(D)}$			$\pm 1$		%
Total output error lifetime drift	$E_{TOT(D)}$			$\pm 1$		%

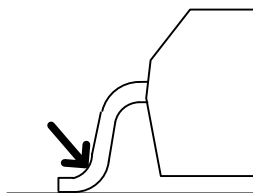
## MCQ1806-5-50-AEC1 PERFORMANCE CHARACTERISTICS

$V_{CC} = 5V$ ,  $T_J = -40^\circ C$  to  $+125^\circ C$ , unless otherwise noted.

Parameters	Symbol	Condition	Min	Typ <sup>(5)</sup>	Max	Units
Optimized accuracy range <sup>(7)</sup>	$I_P$		-50		+50	A
Sensitivity	SENS	$-50A \leq I_P \leq +50A$ , $T_J = 25^\circ C$		40		mV/A
Sensitivity error	$E_{SENS}$	$I_P = 50A$ , $T_J = 25^\circ C$ to $125^\circ C$	-2		+2	%
		$I_P = 50A$ , $T_J = -40^\circ C$ to $+25^\circ C$	-4		+4	%
Offset voltage <sup>(8)</sup>	$V_{OE}$	$I_P = 0A$ , $T_J = 25^\circ C$ to $125^\circ C$	-10		+10	mV
		$I_P = 0A$ , $T_J = -40^\circ C$ to $+25^\circ C$	-10		+10	mV
Total output error	$E_{TOT}$	$I_P = 50A$ , $T_J = 25^\circ C$ to $125^\circ C$	-2.5		+2.5	%
		$I_P = 50A$ , $T_J = -40^\circ C$ to $+25^\circ C$	-4.5		+4.5	%
Sensitivity error lifetime drift	$E_{SENS(D)}$			$\pm 1$		%
Total output error lifetime drift	$E_{TOT(D)}$			$\pm 1$		%

### Notes:

- 5) Typical values denoted with the "±" sign signify  $\pm 3$  sigma values.
- 6) Beyond the maximum optimized accuracy range, the current sensor continues to provide an analog  $V_{OUT}$  proportional to the primary current ( $I_P$ ) until the device reaches the high or low saturation voltage. However, the nonlinearity increases when  $I_P$  exceeds the upper end of the specified rated current range ( $I_{P(MAX)}$ ).
- 7) The device can operate at a higher  $I_P$  and ambient temperature ( $T_A$ ), as long as the temperature does not exceed the maximum junction temperature [ $T_J (MAX)$ ].
- 8) The offset voltage does not incorporate any error due to the external magnetic fields.
- 9) Guaranteed by design and characterization.
- 10) The resistance is defined as the total resistance measured between a point of the lead and the solder joint, assuming that the two  $IP+$  pins (and  $IP-$  pins) have the same potential (see Figure 1). This definition corresponds to the effective resistance used to estimate the Joule heating, calculated with  $R \times I_P^2$ .



11) Figure 1: Total Resistance

## FUNCTIONAL BLOCK DIAGRAM

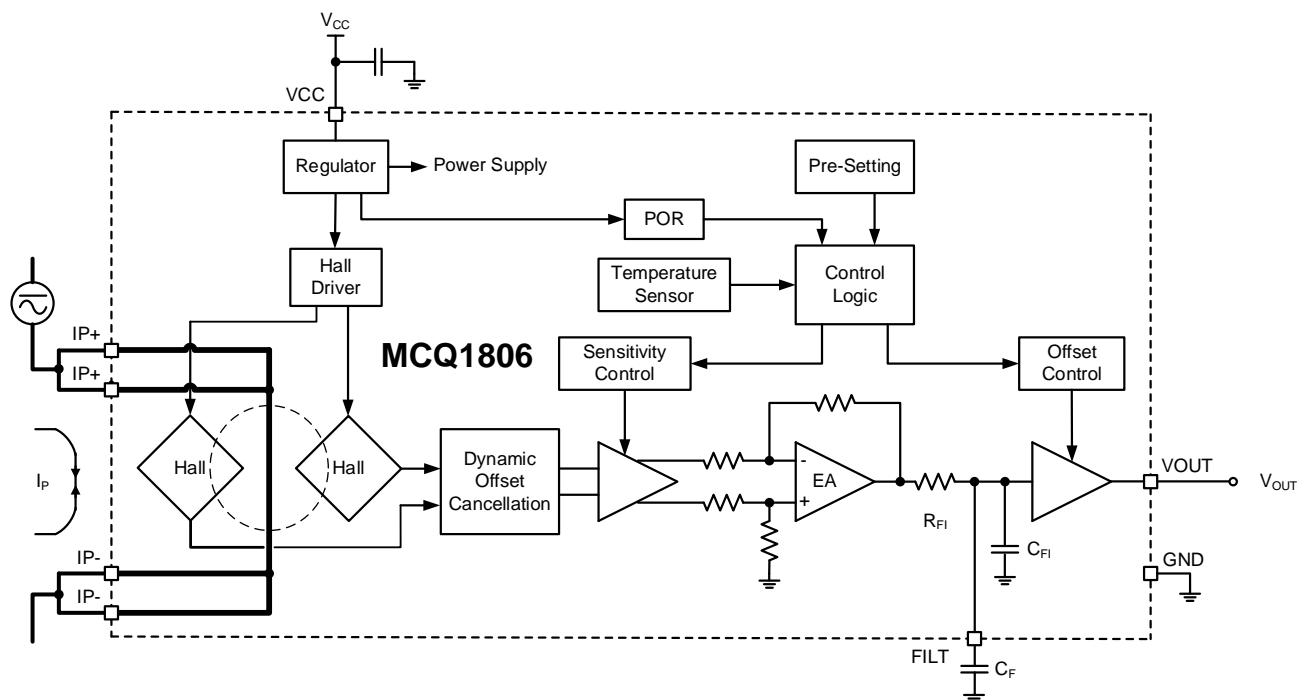


Figure 2: Functional Block Diagram

## OPERATION

### Current Rating

$I_{P_{MAX}}$  is the rated current. The sensor output is linear, and is a function of the primary current ( $I_P$ ).  $I_P$  follows the specified performances when  $I_P$  is between  $-I_{P_{MAX}}$  and  $+I_{P_{MAX}}$  (see Figure 3). Beyond the rated current ( $I_{P_{MAX}}$ ), the current sensor continues to provide an analog output voltage ( $V_{OUT}$ ) proportional to  $I_P$  until the device reaches the high or low saturation voltage. However, the nonlinearity increases when  $I_P$  exceeds  $I_{P_{MAX}}$ .

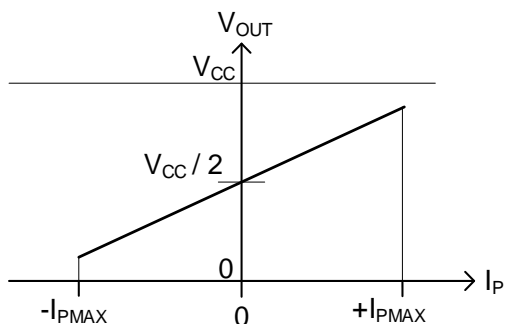


Figure 3: Sensor Output Function

### Sensitivity (SENS)

The sensitivity (SENS, in mV/A) indicates how the output change when  $I_P$  changes. SENS is the product of the average between the two coupling constants ( $P_{MCF1}$  and  $P_{MCF2}$ , in mT/A) and the transducer gain (in mV/mT). The gain is factory-trimmed to the sensor's target sensitivity.

### Coupling Constants ( $P_{MCF1}$ and $P_{MCF2}$ )

Figure 4 shows a cross-section of the sensor. The first and second Hall magnetic coupling factors are defined as the amount of vertical magnetic field produced at the sensing points 1 and 2 ( $B_1$  and  $B_2$ , respectively) per unit of current injected into the primary conductor. Due to the asymmetrical shape of the primary conductor, the magnetic field generated in the two sensing points is different.

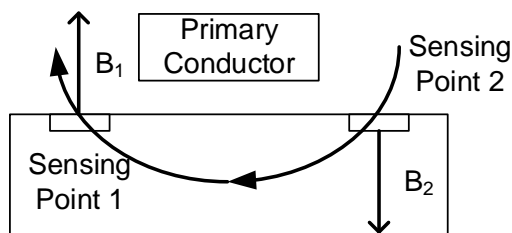


Figure 4: Sensor Cross-Section

### Noise ( $I_N$ )

The noise ( $I_N$ ) is a random deviation that cannot be removed by calibrating the device. The input's referred noise is the root mean square (RMS) of the sensor's output noise (in mV), divided by SENS (in mV/A).  $I_N$  represents the smallest current that the device is able to resolve without any external signal treatment.

### Zero-Current Output Voltage ( $V_{OUT(Q)}$ )

The zero-current  $V_{OUT}$  ( $V_{OUT(Q)}$ ) is  $V_{OUT}$  while  $I_P$  is 0A. The nominal value is the supply voltage ( $V_{CC}$ ) divided by 2 ( $V_{CC} / 2$ ).

### Offset Voltage ( $V_{OE}$ )

The offset voltage ( $V_{OE}$ ) is the difference between  $V_{CC} / 2$  and  $V_{OUT(Q)}$ . The variation is due to thermal drift, as well as the factory's resolution limits related to voltage offset trimming. To convert this voltage into amperes, divide  $V_{OE}$  by SENS.

### Nonlinearity ( $E_{LIN}$ )

$I_P$  and the sensor output should have a linear relationship, indicated by a straight line. A line that is not straight indicates nonlinearity ( $E_{LIN}$ ), which is a deviation.

$E_{LIN}$  (in %) can be calculated with Equation (1):

$$E_{LIN} = \frac{\text{Max}(V_{OUT}(I_P) - V_{LIN}(I_P))}{V_{OUT}(I_{P_{MAX}}) - V_{OUT}(-I_{P_{MAX}})} \times 100 \quad (1)$$

Where  $V_{LIN}(I_P)$  is the approximate straight line calculated by the least square method.

Note that depending on the curvature of  $V_{OUT}(I_P)$ ,  $E_{LIN}$  can be positive or negative.

### Total Output Error ( $E_{TOT}$ )

The total output error ( $E_{TOT}$ , in %) is the relative difference between the sensor output and the ideal output at a given  $I_P$ .  $E_{TOT}$  can be estimated with Equation (2):

$$E_{TOT}(I_P) = \frac{V_{OUT}(I_P) - V_{OUT\_IDEAL}(I_P)}{\text{SENS} \times I_P} \times 100 \quad (2)$$

The ideal  $V_{OUT}$  ( $V_{OUT\_IDEAL}$ ) can be calculated with Equation (3):

$$V_{OUT\_IDEAL}(I_P) = \frac{V_{CC}}{2} + \text{SENS} \times I_P \quad (3)$$

$E_{TOT}$  incorporates all error sources, and is a function of  $I_P$ . At currents close to  $I_{P_{MAX}}$ ,  $E_{TOT}$  is affected mainly by the SENS error. At currents close to 0A,  $E_{TOT}$  is mostly caused by  $V_{OE}$ . Note that when  $I_P = 0A$ ,  $E_{TOT}$  diverges to infinity due to the constant offset.

### Ratiometry Coefficients

Ideally, the sensor output should be ratiometric. This means that SENS and  $V_{OUT(Q)}$  scale with  $V_{CC}$ . The ratiometry coefficients ( $K_{SENS}$  and  $K_{VO}$ ) measure whether the SENS and  $V_{OUT(Q)}$  outputs are proportional.

$K_{SENS}$  can be estimated with Equation (4):

$$K_{SENS} = \frac{SENS(V_{CC}) / SENS(V_{CC\_TYP})}{V_{CC} / V_{CC\_TYP}} \quad (4)$$

$K_{VO}$  can be calculated with Equation (5):

$$K_{VO} = \frac{V_{OUT}(I_P = 0, V_{CC}) / V_{OUT}(I_P = 0, V_{CC\_TYP})}{V_{CC} / V_{CC\_TYP}} \quad (5)$$

Where  $V_{CC\_TYP}$  is 3.3V for the 3.3V option, and  $V_{CC\_TYP}$  is 5V for the 5V option.

Ideally both  $K_{SENS}$  and  $K_{VO}$  should equal 1.

### Power-On Time ( $t_{PO}$ )

The power-on time ( $t_{PO}$ ) is the time interval from when power is first applied to the device until the output can correctly indicate the applied  $I_P$ .  $t_{PO}$  is defined as the time between the following moments:

1.  $t_1$ :  $V_{CC}$  reaches the minimum operating voltage ( $V_{CC\_UVLO}$ ).
2.  $t_2$ :  $V_{OUT}$  reaches 90% of its final value ( $V_{OUT\_FINAL}$ ) under an applied  $I_P$  (see Figure 5).

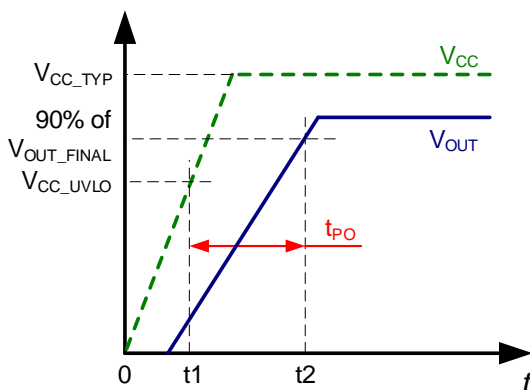


Figure 5: Power-On Time ( $t_{PO}$ )

### Propagation Delay ( $t_{PD}$ )

The propagation delay ( $t_{PD}$ ) represents the internal latency between an event that has been measured and the sensor's response.  $t_{PD}$  is defined as the time between the following moments:

1.  $t_1$ : The  $I_P$  signal reaches 20% of its final value ( $I_{P\_FINAL}$ ).
2.  $t_2$ :  $V_{OUT}$  reaches 20% of  $V_{OUT\_FINAL}$ , as it corresponds to the applied  $I_P$  (see Figure 6).

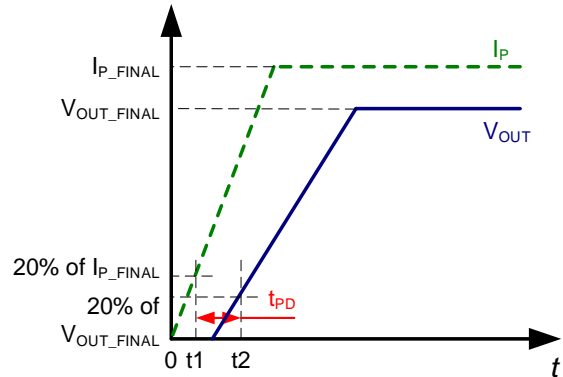


Figure 6: Propagation Delay ( $t_{PD}$ )

### Rising Time ( $t_R$ )

The rising time ( $t_R$ ) is defined as the time between the following moments:

1.  $t_1$ : The sensor's  $V_{OUT}$  reaches 10% of its full-scale value ( $V_{OUT\_MAX}$ ).
2.  $t_2$ : The sensor's  $V_{OUT}$  reaches 90% of  $V_{OUT\_MAX}$  (see Figure 7).

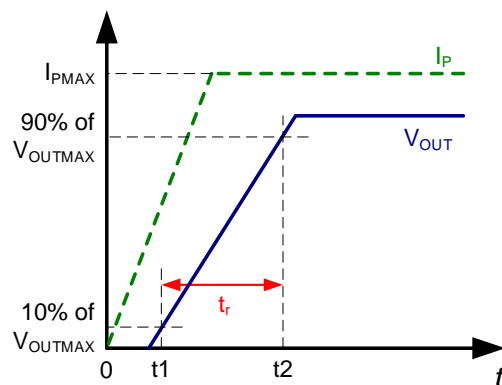


Figure 7: Rising Time ( $t_R$ )

The sensor bandwidth ( $f_{BW}$ ) is defined as the 3dB cutoff frequency. Using  $t_R$ ,  $f_{BW}$  can be estimated with Equation (6):

$$f_{BW} = 0.35 / t_R \quad (6)$$

### Response Time ( $t_{\text{RESPONSE}}$ )

The response time ( $t_{\text{RESPONSE}}$ ) is defined as the time between the following moments:

1.  $t_1$ : The  $I_P$  signal reaches 90% of  $I_{P\_FINAL}$ .
2.  $t_2$ :  $V_{OUT}$  reaches 90% of  $V_{OUT\_FINAL}$ , as it corresponds to the applied  $I_P$  (see Figure 8).

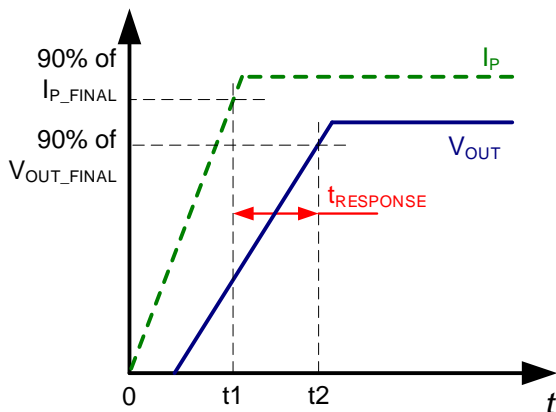


Figure 8: Response Time ( $t_{\text{RESPONSE}}$ )

### Adjustable Bandwidth

The sensor dynamic can be adjusted with an external capacitor ( $C_F$ ). In this scenario,  $f_{BW}$  can be calculated with Equation (7):

$$f_{BW} = \frac{1}{2\pi} \times \frac{1}{R_{FI} \times (C_{FI} + C_F)} \quad (7)$$

Where  $R_{FI}$  is the internal filter resistance, and  $C_{FI}$  is the internal filter capacitance.

Figure 9 shows the typical bandwidth curve.

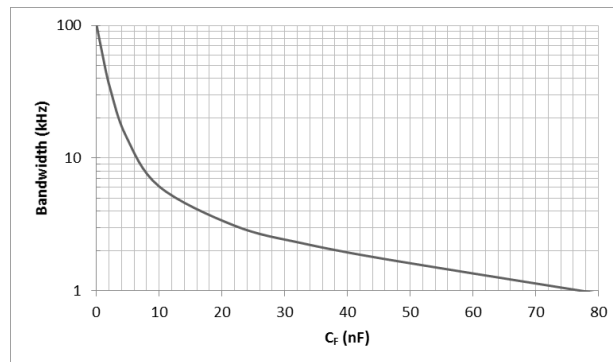


Figure 9: Bandwidth vs.  $C_F$

## APPLICATION INFORMATION

### Self-Heating Performance

The conductor and MCQ1806 temperatures can rise when current flows through the primary conductor. This means that self-heating should be carefully verified to ensure that the IC junction temperature ( $T_J$ ) does not exceed its maximum threshold ( $165^\circ\text{C}$ ).

The thermal behavior strongly depends on the IC's thermal environment and cooling capacity. In particular, thermal behavior depends on the PCB copper area and thickness. The thermal response is also related to the current (e.g. the amplitude and frequency of an AC current, or the peaks and duty cycle of a pulsed DC current).

Figure 10 shows the self-heating performance of the MCQ1806 with a DC current input. This data was collected with the part mounted on the MCQ1806 evaluation board (see Figure 11) when  $T_A = 25^\circ\text{C}$ . Values were taken after 10 minutes of continuous current.

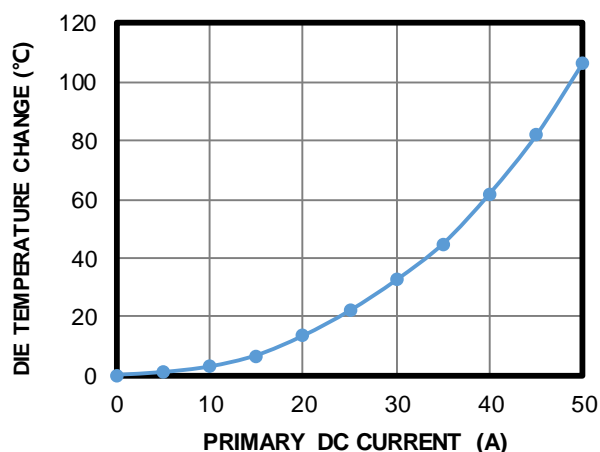


Figure 10: Self-Heating Performance with a DC Current Input

### Recommended PCB Layout

Efficient PCB layout is critical for stable operation. For the best results, refer to Figure 11 and follow the guidelines below:

1. The board should include a total of  $2200\text{mm}^2$ , 4oz (139 $\mu\text{m}$ ) copper connected to the primary conductor via the IP+ and IP- pins.
2. Ensure that the copper covers both the top and bottom layers.
3. Use thermal vias to connect the two layers.

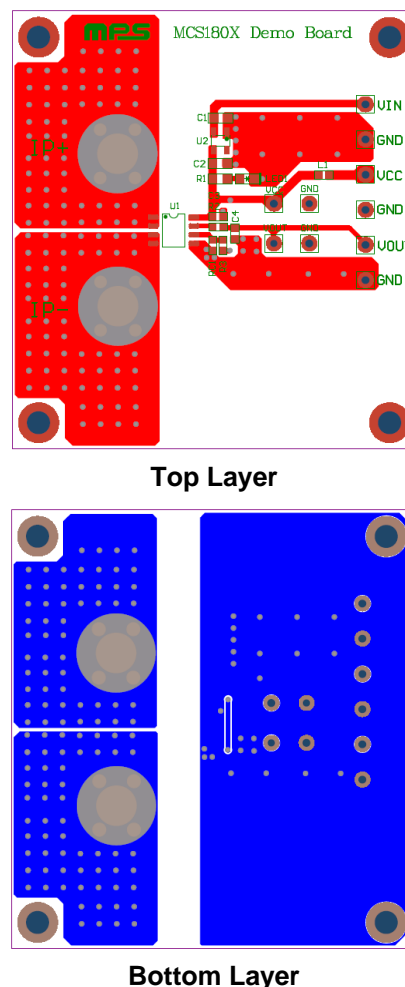


Figure 11: Recommended PCB Layout

## TYPICAL APPLICATION CIRCUIT

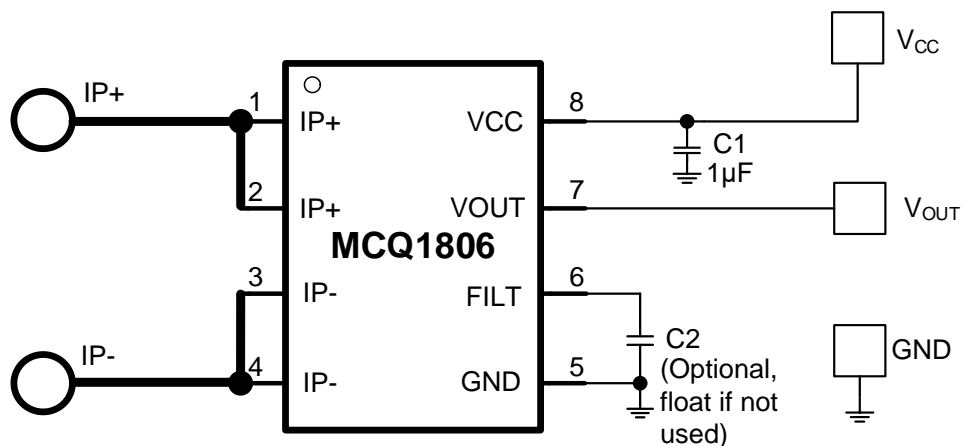
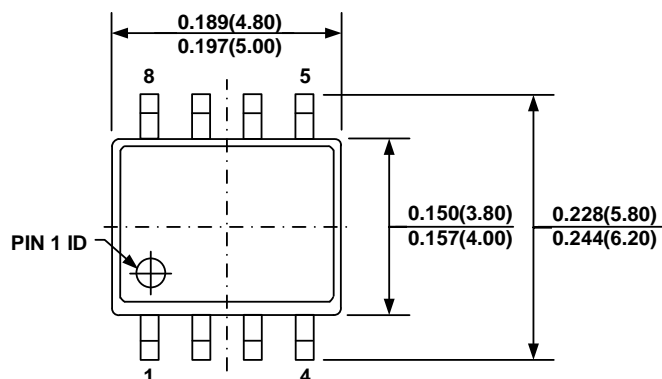


Figure 12: Typical Application Circuit

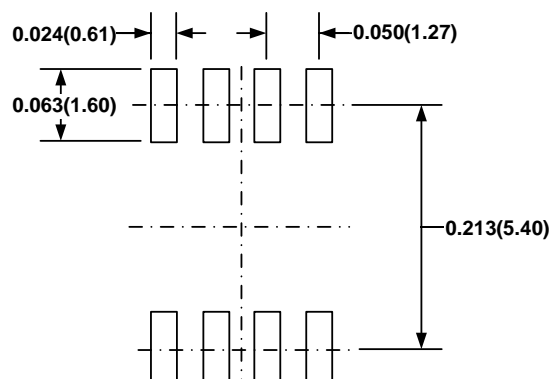


# PACKAGE INFORMATION

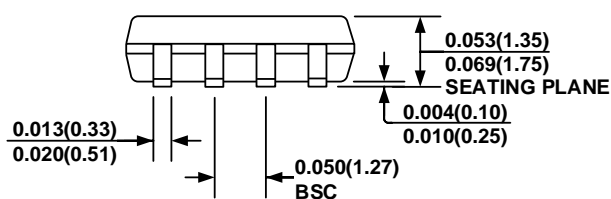
## SOIC-8



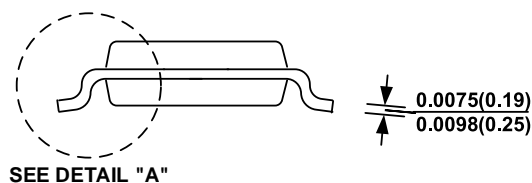
**TOP VIEW**



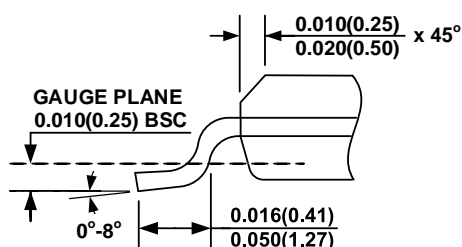
**RECOMMENDED LAND PATTERN**



**FRONT VIEW**



**SIDE VIEW**

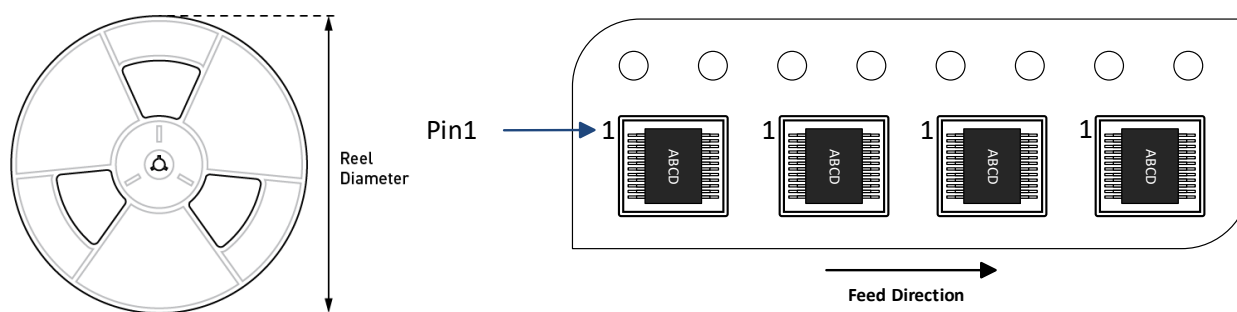


**DETAIL "A"**

### NOTE:

- 1) CONTROL DIMENSION IS IN INCHES. DIMENSION IN BRACKET IS IN MILLIMETERS.
- 2) PACKAGE LENGTH DOES NOT INCLUDE MOLD FLASH, PROTRUSION, OR GATE BURRS.
- 3) PACKAGE WIDTH DOES NOT INCLUDE INTERLEAD FLASH OR PROTRUSIONS.
- 4) LEAD COPLANARITY (BOTTOM OF LEADS AFTER FORMING) SHALL BE 0.004" INCHES MAX.
- 5) DRAWING CONFORMS TO JEDEC MS-012, VARIATION AA.
- 6) DRAWING IS NOT TO SCALE.

## CARRIER INFORMATION



Part Number	Package Description	Quantity /Reel	Quantity/ Tube	Quantity /Tray	Reel Diameter	Carrier Tape Width	Carrier Tape Pitch
MCQ1806GS-3-05-AEC1-Z	SOIC-8	2500	N/A	N/A	13in	12mm	8mm
MCQ1806GS-3-10-AEC1-Z	SOIC-8	2500	N/A	N/A	13in	12mm	8mm
MCQ1806GS-3-20-AEC1-Z	SOIC-8	2500	N/A	N/A	13in	12mm	8mm
MCQ1806GS-3-30-AEC1-Z	SOIC-8	2500	N/A	N/A	13in	12mm	8mm
MCQ1806GS-3-40-AEC1-Z	SOIC-8	2500	N/A	N/A	13in	12mm	8mm
MCQ1806GS-3-50-AEC1-Z	SOIC-8	2500	N/A	N/A	13in	12mm	8mm
MCQ1806GS-5-05-AEC1-Z	SOIC-8	2500	N/A	N/A	13in	12mm	8mm
MCQ1806GS-5-10-AEC1-Z	SOIC-8	2500	N/A	N/A	13in	12mm	8mm
MCQ1806GS-5-20-AEC1-Z	SOIC-8	2500	N/A	N/A	13in	12mm	8mm
MCQ1806GS-5-30-AEC1-Z	SOIC-8	2500	N/A	N/A	13in	12mm	8mm
MCQ1806GS-5-40-AEC1-Z	SOIC-8	2500	N/A	N/A	13in	12mm	8mm
MCQ1806GS-5-50-AEC1-Z	SOIC-8	2500	N/A	N/A	13in	12mm	8mm



## REVISION HISTORY

Revision #	Revision Date	Description	Pages Updated
1.0	1/10/2023	Initial Release	-

**Notice:** The information in this document is subject to change without notice. Please contact MPS for current specifications. Users should warrant and guarantee that third-party Intellectual Property rights are not infringed upon when integrating MPS products into any application. MPS will not assume any legal responsibility for any said applications.